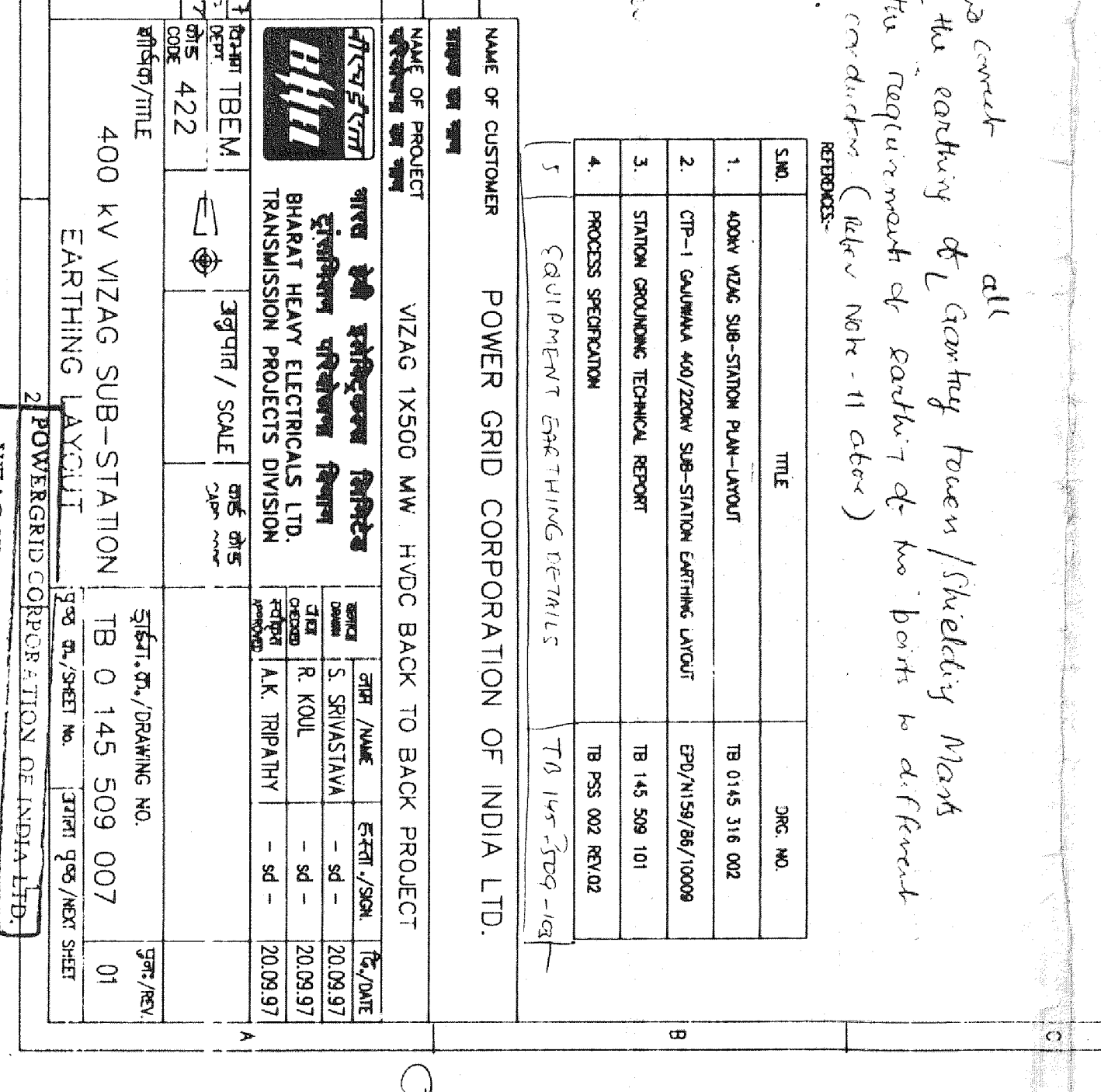


ITEM NO.	DESCRIPTION
1	CIRCUIT BREAKER SF6 - GEC-A MAKE
2	CIRCUIT BREAKER SF6 - BHEL MAKE
3	CURRENT TRANSFORMER - SINGLE PHASE
4	CENTRE BREAK ISOLATOR WITH DOUBLE E/S
5	CENTRE BREAK ISOLATOR WITH SINGLE E/S
6	EARTH SWITCH - SINGLE PHASE
7	WAVE TRAP
8	CAPACITOR VOLTAGE TRANSFORMER-SINGLE PHASE
9	SHUNT REACTOR - BHEL MAKE
10	SURGE ARRESTER
11	POST INSULATOR
12	CENTRE BREAK ISOLATOR WITHOUT E/S

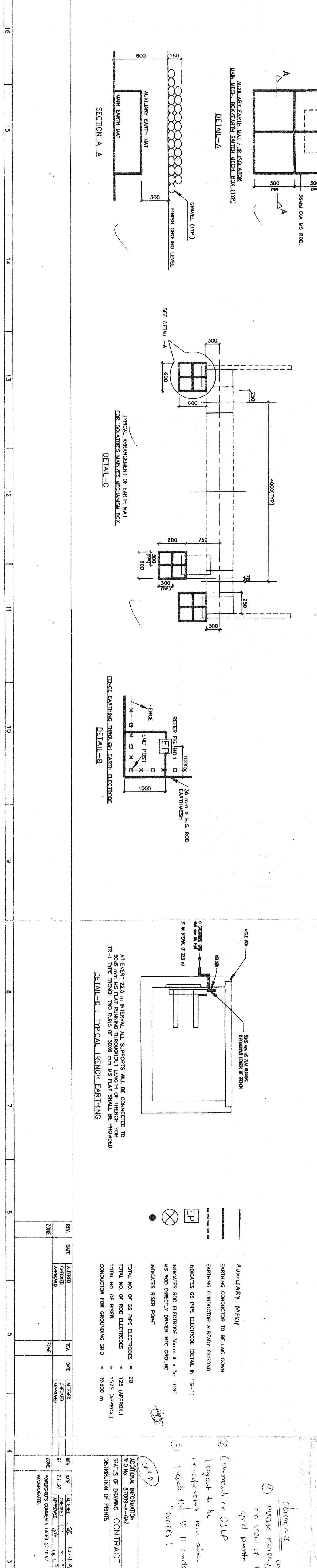
NOTE

- Earth is made of 31 mm x 45 rod conductor with spacing at 22.5 m x 8 spaced 600 mm below ground level.
- 300 ELECTRODES ARE MADE OF 31 mm LONG 38 mm x 45 rod conductor & spaced 600 mm.
- CONCRETE FOUNDATION ARE MADE OF 31 mm x 45 rod conductor and 2 nos. BE CONNECTED TO EARTHING FOR DETAILS REFER TO 14-509-103 EQUIPMENT FOUNDATION.
- THE FOUNDATION/RAILING EARTHING CONNECTIONS SHALL BE THROUGH ONLY EXACT LOCATIONS OF RISERS, 300 ELECTRODES AND THIS SHALL BE PILED TO SURF AT SITE.
- ANNOUNCERS FOR BARRED CONNECTIONS SHALL BE THROUGH AND CAN BE WAVED TO SURF.
- ANNOUNCERS FOR BARRED CONNECTIONS SHALL BE THROUGH AND CAN BE WAVED TO SURF.
- ALL ACCESSORIES ASSOCIATED WITH THE SHUNT REACTOR TO BE COOKING SAME MATERIAL ETC.
- SHUNT REACTOR SHALL BE DONE AT EVERY 22.5 m INTERVAL AS SHOWN IN DETAIL-D.
- WAVE TRAP SHALL BE DONE AT EVERY 22.5 m INTERVAL AS SHOWN IN DETAIL-D.
- 31 ELECTRODES ARE MADE OF 31 mm x 45 rod conductor & spaced 600 mm.
- CONCRETE FOUNDATION ARE MADE OF 31 mm x 45 rod conductor and 2 nos. BE CONNECTED TO EARTHING FOR DETAILS REFER TO 14-509-103 EQUIPMENT FOUNDATION.
- ANNOUNCERS FOR BARRED CONNECTIONS SHALL BE THROUGH AND CAN BE WAVED TO SURF.
- ANNOUNCERS FOR BARRED CONNECTIONS SHALL BE THROUGH AND CAN BE WAVED TO SURF.
- ALL ACCESSORIES ASSOCIATED WITH THE SHUNT REACTOR TO BE COOKING SAME MATERIAL ETC.
- SHUNT REACTOR SHALL BE DONE AT EVERY 22.5 m INTERVAL AS SHOWN IN DETAIL-D.
- WAVE TRAP SHALL BE DONE AT EVERY 22.5 m INTERVAL AS SHOWN IN DETAIL-D.



ELEVATION: E.T. ELECTRODE

31mm x 45 rod conductor
 600mm
 100mm
 50mm



DETAIL-A
 MAIN BUS CONNECTION

DETAIL-B
 WAVE TRAP CONNECTION

DETAIL-C
 SHUNT REACTOR CONNECTION

DETAIL-D
 TYPICAL TRENCH EARTHING

NO.	DATE	REVISION
1	15/08/2007	ISSUED FOR TENDER
2	15/08/2007	ISSUED FOR TENDER
3	15/08/2007	ISSUED FOR TENDER

APPROVED IN CATEGORY: [Signature]
DATE: 15/08/2007
SIGNATURE: [Signature]

POWER GRID CORPORATION OF INDIA LTD.
 WZAG 1X500 KV LINE BACK TO BACK PROJECT
 TRANSMISSION DIVISION
 BHARAT HEAVY ELECTRICALS LTD.
 400 KV WZAG SUB-STATION
 TB 0145 509 007